



GOOD MORNING
Have Good Trading Day

TUESDAY



Price is what you pay.
Value is what you get.

- Warren Buffet



MARKET PULSE

INDIAN INDICES

| NAME | CMP | NET CH. | % |
|--------|-------|---------|-------|
| SENSEX | 28243 | +377 | +1.35 |
| NIFTY | 8738 | +126 | +1.47 |

INDIAN ADR'S

| SYMBOL | CLOSE | GAIN/ LOSS % |
|-----------|-------|--------------|
| DRREDDY | 47.41 | +2.13 |
| HDFCBANK | 72.38 | +0.68 |
| ICICIBK | 7.60 | +1.74 |
| INFY | 15.96 | +1.14 |
| TATAMOTOR | 40.99 | +2.53 |
| WIPRO | 9.73 | +0.21 |

FII AND MF ACTIVITY

| SYMBOL | In Crs. |
|-----------------------|---------|
| FIIs Eq (Provisional) | 34.22 |
| FIIs Index Future | -159.13 |
| FIIs Index Options | -293.20 |
| FIIs Stock Future | 662.86 |
| FIIs Stock Options | 85.84 |
| DIIs Eq (Provisional) | 198.02 |

CURRENCY

| | |
|------------|-------------|
| RBI RATE | 03-OCT-2016 |
| RUPEE - \$ | 66.5330 |
| EURO | 74.7166 |
| YEN 100 | 65.7000 |
| GBP | 85.8675 |

MARKET PULSE

GLOBAL INDICES

| NAME | CMP | NET CH. | % |
|-----------|-------|---------|-------|
| DOW | 18253 | -53 | -0.30 |
| NASDAQ | 5300 | -11 | -0.21 |
| NIKKEI | 16744 | +145 | +0.88 |
| HANG SENG | 23565 | -19 | -0.13 |
| SGX NIFTY | 8775 | -13 | -0.16 |

WORLD COMMODITIES

| FUTURE | U\$\$ | CHANGES |
|-------------|---------|---------|
| CRUDE | 48.56 | -0.25 |
| NATURAL GAS | 2.900 | -0.023 |
| GOLD | 1311.40 | -1.3 |
| SILVER | 18.805 | -0.063 |
| COPPER | 2.1870 | -0.0050 |

WORLD EVENTS

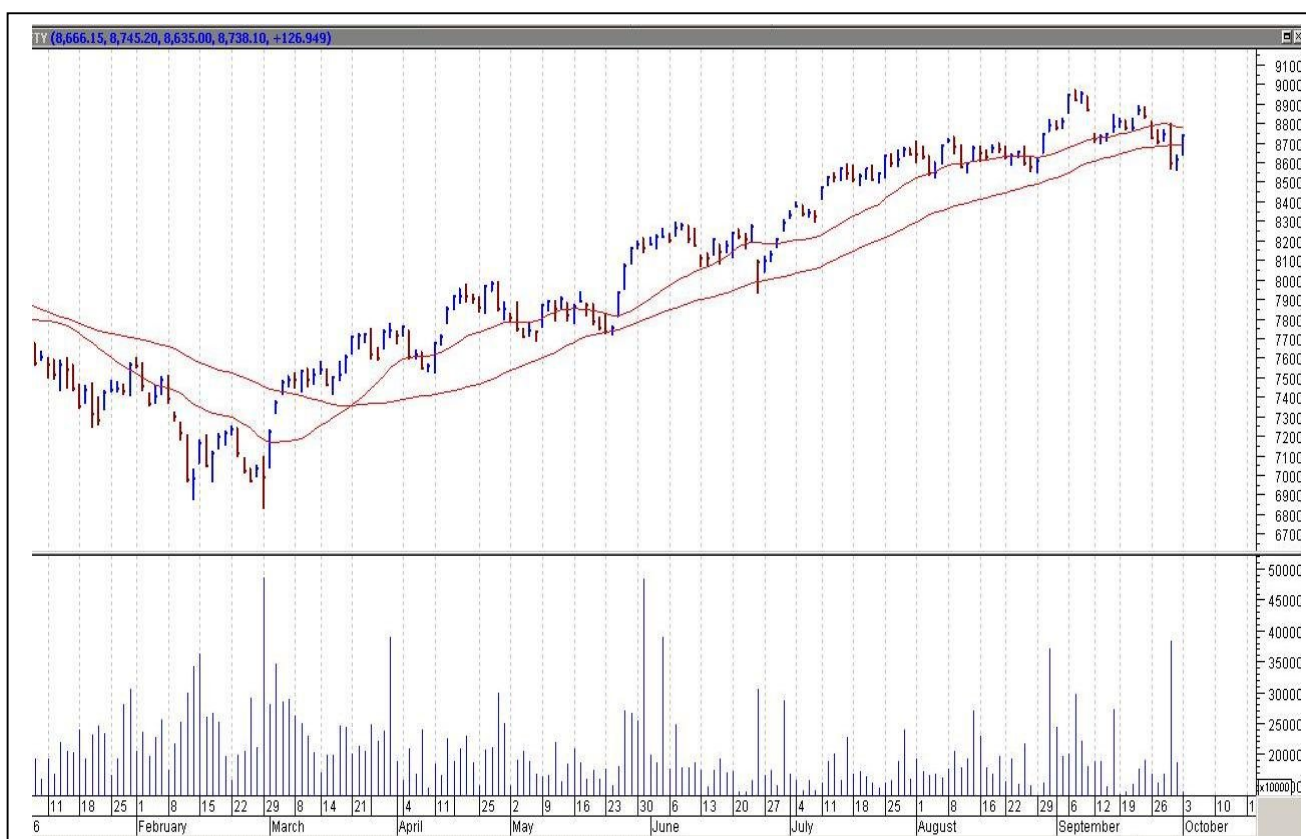
- US: NIL
- UK: Construction PMI

TOP STORY

- September Auto Sales: Hero MotoCorp Total Sales Up 11% At 6.06 Lakh Units.
- Wockhardt: US FDA Excludes Ceftriazone Sodium From Import Alert. Exclusion Will Enable Co To Mfg & Sell Ceftriazone API & Formulation To US.
- JC Penney Says No Intention Of Discontinuing Relationship With Welspun.
- Satin Creditcare approved and allotted shares worth Rs250cr at Rs551.88 per share to qualified institutional buyers.
- Filatex commences commercial production at Dahej plant.
- Vedanta to pump in \$300 mn into Hindustan Zinc: BS
- Mahindra CIE amongst others interested in Amtek Auto's overseas assets: BS
- Manali Pertochem buys Notedome UK for 120cr: FE
- SEBI Fines Piramal Enterprises For Violating Norms On Abbott Deal



NIFTY CHART



MARKET COMMENTARY

Indian equity indices witnessed a blockbuster performance on the first day of the week by vehemently rallying over a percentage points and re-conquering their psychological levels. Except for some mild profit taking in early afternoon trades, Monday's session remained a day of recovery as key equity indices enthusiastically rallied through the day. Investors continued to build hefty positions across the board as sentiments got a boost with India's core sector output rising to 3.2% in August on the back of sharp rise in steel production and a pickup in cement, suggesting a lift in infrastructure and construction activity. Steel production rose 17% to a 37-month high, aided by the low base of last year. Adding the optimism among the market participants, credit rating agency Crisil expects India's gross domestic product (GDP) to grow at 7.9 per cent and agriculture to grow above trend at 4 per cent. The country's GDP will be supported by a boost from consumption especially in the hinterland after a well distributed monsoon this year. Some support also came with the report that foreign investors pumped in more than Rs 20,000 crore into the capital market in September, making it the highest net inflow in 11 months. For today's trade Nifty likely to trade in the range between 8745 – 8765 in the upper side and 8715 – 8695 in the lower side.

MARKET LEVELS

| | CMP | SUPPORT LEVELS | | | | RESISTANCE LEVELS | | | |
|--------|-------|----------------|------|------|------|-------------------|------|------|------|
| NIFTY | 8738 | 8715 | 8695 | 8675 | 8735 | 8745 | 8765 | 8785 | 8825 |
| USDINR | 66.82 | 66.7 | 66.6 | 66.5 | 66.4 | 66.9 | 67 | 67.1 | 67.2 |



BULK DEALS (BSE)

| SCRIP | CLIENT NAME | BUY/SELL | QUANTITY | PRICE |
|------------|--|----------|-----------|-------|
| KALPATPOWR | HSBC GLOBAL INVESTMENT FUNDS MAURITIUS LTD | S | 1,682,208 | 260 |
| KALPATPOWR | HSBC GLOBAL INVESTMENT FUNDS INDIAN EQUITY | B | 1,682,208 | 260 |
| EPCIN | RELIANCE CAPITAL LTD | S | 517,000 | 150.3 |
| | | | | |
| | | | | |

BULK DEALS (NSE)

| SCRIP | CLIENT NAME | BUY/SELL | QUANTITY | PRICE |
|------------|-------------------------------|----------|----------|--------|
| ATLASCYCLE | KHADE SHASHANK S | BUY | 18200 | 264.29 |
| ESSARSHPNG | INDIA MAX INVESTMENT FUND LTD | SELL | 1800000 | 28.75 |
| MCDHOLDING | PARIKH NIRMALABEN SURESHBHAI | BUY | 148700 | 39.41 |
| ORCHIDPHAR | SICOM LIMITED | SELL | 500000 | 39.2 |
| PRAKASHCON | PRAFULLA BHAT | BUY | 734620 | 19.05 |

SCRIP'S IN F&O BAN

(To resume for normal trading below 80% of market wide limit required)

IBREALEST

Initial Public Offering (IPO)

| Company Name | Security type | Issue Start Date | Issue End Date | Status |
|----------------------------|---------------|------------------|----------------|-------------|
| Endurance Technologies Ltd | Equity | 05-Oct-2016 | 07-Oct-2016 | Forthcoming |
| HPL Electric and Power Ltd | Equity | 22-Sep-2016 | 26-Sep-2016 | Closed |



| NIFTY 50 STOCKS: SUPPORT & RESISTANCE | | | | | | |
|---------------------------------------|-------|-----------|-----------|-------------|-------------|-------------|
| Symbol | Close | Support 1 | Support 2 | Pivot Point | Resistance1 | Resistance2 |
| ACC | 1632 | 1612 | 1591 | 1625 | 1646 | 1659 |
| ADANI PORTS | 265 | 260 | 256 | 264 | 268 | 272 |
| AMBUJACEM | 259 | 255 | 251 | 257 | 261 | 264 |
| ASIANPAINT | 1193 | 1173 | 1152 | 1186 | 1206 | 1219 |
| AXISBANK | 551 | 545 | 539 | 549 | 555 | 558 |
| BAJAJ-AUTO | 2881 | 2838 | 2795 | 2873 | 2916 | 2951 |
| BANKBARODA | 169 | 168 | 166 | 169 | 170 | 172 |
| BHARTIARTL | 319 | 315 | 312 | 318 | 321 | 324 |
| BHEL | 137 | 136 | 134 | 137 | 138 | 139 |
| BOSCHLTD | 22753 | 22590 | 22427 | 22859 | 23021 | 23290 |
| BPCL | 628 | 618 | 609 | 624 | 634 | 640 |
| CAIRN | 208 | 203 | 197 | 206 | 211 | 215 |
| CIPLA | 589 | 583 | 578 | 588 | 593 | 597 |
| COALINDIA | 328 | 323 | 319 | 326 | 331 | 333 |
| DRREDDY | 3161 | 3122 | 3083 | 3153 | 3192 | 3224 |
| GAIL | 386 | 376 | 366 | 382 | 392 | 398 |
| GRASIM | 4900 | 4860 | 4820 | 4896 | 4936 | 4971 |
| HCLTECH | 809 | 798 | 787 | 805 | 816 | 823 |
| HDFC | 1426 | 1398 | 1370 | 1414 | 1442 | 1458 |
| HDFCBANK | 1287 | 1279 | 1271 | 1285 | 1293 | 1298 |
| HEROMOTOCO | 3521 | 3458 | 3395 | 3499 | 3562 | 3603 |
| HINDALCO | 154 | 153 | 151 | 154 | 155 | 157 |
| HINDUNILVR | 869 | 860 | 851 | 869 | 878 | 887 |
| ICICIBANK | 256 | 252 | 248 | 254 | 259 | 261 |
| IDEA | 81 | 80 | 78 | 81 | 82 | 83 |
| INDUSINDBK | 1233 | 1205 | 1176 | 1222 | 1251 | 1268 |
| INFY | 1038 | 1029 | 1021 | 1035 | 1043 | 1049 |
| ITC | 242 | 241 | 240 | 243 | 244 | 245 |
| KOTAKBANK | 788 | 783 | 778 | 788 | 793 | 798 |
| LT | 1471 | 1446 | 1421 | 1460 | 1485 | 1500 |
| LUPIN | 1494 | 1483 | 1473 | 1495 | 1505 | 1517 |
| M&M | 1444 | 1412 | 1380 | 1432 | 1464 | 1484 |
| MARUTI | 5681 | 5635 | 5589 | 5678 | 5723 | 5766 |
| NTPC | 151 | 149 | 147 | 150 | 152 | 153 |
| ONGC | 260 | 254 | 249 | 258 | 264 | 268 |
| PNB | 143 | 142 | 141 | 143 | 144 | 145 |
| POWERGRID | 181 | 177 | 173 | 180 | 184 | 187 |
| RELIANCE | 1091 | 1075 | 1060 | 1092 | 1107 | 1123 |
| SBIN | 255 | 253 | 251 | 255 | 257 | 259 |
| SUNPHARMA | 757 | 751 | 745 | 756 | 762 | 767 |
| TATAMOTORS | 541 | 538 | 535 | 542 | 545 | 549 |
| TATAPOWER | 76 | 76 | 75 | 76 | 77 | 78 |
| TATASTEEL | 383 | 378 | 373 | 381 | 386 | 390 |
| TCS | 2412 | 2389 | 2367 | 2423 | 2446 | 2480 |
| TECHM | 421 | 418 | 415 | 421 | 424 | 428 |
| ULTRACEMCO | 3928 | 3876 | 3824 | 3906 | 3958 | 3987 |
| VEDL | 179 | 175 | 171 | 177 | 181 | 183 |
| WIPRO | 479 | 475 | 472 | 478 | 481 | 484 |
| YESBANK | 1270 | 1261 | 1252 | 1272 | 1281 | 1292 |
| ZEEL | 579 | 555 | 531 | 573 | 596 | 614 |

NEWS & RUMOURS:

- Gold (Spot Dollar) major support = \$1290/\$1265 & Resistance = \$1341/\$1375.
- Crude oil range->\$43 to \$53.
- Stocks Decline before U.S. Data as Pound Slides on Brexit Angst: - Stocks declined with the pound on concern Britain may face a so-called hard Brexit after Prime Minister Theresa May pledged to start pulling the U.K. out of the European Union by March. Oil fluctuated.
- Dollar pushes higher vs. rivals on strong U.S. data: - The dollar pushed higher against the other major currencies on Monday, after data showing that U.S. manufacturing activity returned to expansion in September boosted optimism over the strength of the economy.
- Hurricane Matthew's threat to Haiti grows; some resist shelters: - Hurricane Matthew edged closer to Haiti on Monday, bringing 130- mile-per-hour (209 kph) winds and torrential rain that could wreak havoc in the Caribbean nation, but some 2,000 people in one coastal town refused to evacuate. The center of Matthew, a violent Category 4 storm, is expected to near southwestern Haiti and Jamaica on Monday night, the U.S. National Hurricane Center said.
- Crude hovers near 3-month highs on OPEC deal: - U.S. oil futures were hovering near three-month highs on Friday, as the production freeze announced last week by major oil producers continued to spur optimism.
- Gold prices little changed near 2-week lows: - Gold prices were little changed near two-week lows on Monday, as market sentiment remained supported as concerns over Deutsche Bank's health continued to ease. On the Comex division of the New York Mercantile Exchange, [gold futures](#) for December delivery were steady at \$1,318.50.

TRENDS & OUTLOOK – DATE: 04- Oct- 2016

PRECIOUS METALS:

| COMMDITY (MCX) | S2 | S1 | PIVOT POINT | R1 | R2 |
|----------------|-------|-------|-------------|-------|-------|
| GOLD (Dec) | 30330 | 30630 | 30945 | 31210 | 31579 |
| SILVER (Dec) | 43000 | 44100 | 45345 | 46200 | 47345 |

BASE METALS

| COMMDITY (MCX) | S2 | S1 | PIVOT POINT | R1 | R2 |
|----------------|--------|--------|-------------|--------|--------|
| COPPER (Nov) | 315 | 320 | 325 | 331 | 336 |
| ZINC (Oct) | 153.45 | 156.30 | 159.10 | 162.70 | 165.90 |
| LEAD (Oct) | 133.45 | 136.60 | 139.20 | 142.45 | 145.60 |
| NICKEL (Oct) | 659 | 675 | 691 | 715 | 736 |

ENERGY

| COMMDITY (MCX) | S2 | S1 | PIVOT POINT | R1 | R2 |
|-------------------|------|------|-------------|------|------|
| CRUDE OIL (Oct) | 3006 | 3110 | 3220 | 3333 | 3470 |
| NATURAL GAS (Oct) | 183 | 187 | 193 | 198 | 203 |

DATA TALKS : TODAY'S ECONOMIC DATA :

RBA Rate Statement, Construction PMI of GBP, GDT Price Index of NZD.



LET THE
WOMAN
POWER RISE

**WOMEN
DESK**

All the Ladies in the house are
cordially invited to come
& explore their trading talents.

TOLL FREE: 18001030059



Registered Office

Indira House, 3rd Floor, 5 Topiwala Lane,
Opp. Lemington Road Police Station, Grant Road (East), Mumbai - 400007.

Corporate Office

'Ramavat House' E-15, Saket Nagar, Indore - 452018 (M.P.)

Customer Care

Tel: +91-731-4097170/ 71/ 72/ 73/ 74 M. +91 93031 72345

Email: customercare@indiratrade.com www.indiratrade.com



INSTITUTIONAL DEALING UNIT

Africa House, 5, Topiwalla Lane, Lamington Road, Mumbai, 400007

Tel: +91 22 30080678 Fax : +91 22 23870767 Email : ie@indiratrade.com

Disclaimer

This report is for private circulation within the Indira Group. This report is strictly confidential and for information of the selected recipient only and may not be altered in any way, transmitted to, copied or distributed, in part or in whole, to any other person or to the media or reproduced in any form. This report should not be construed as an offer or solicitation to buy or sell any securities or any interest in securities. It does not constitute a personal recommendation or take into account the particular investment objectives, financial situations, or any such factor. The information, opinions estimates and forecasts contained here have been obtained from, or are based upon, sources we believe to be reliable, but no representation of warranty, express or implied, is made by us to their accuracy or completeness. Opinions expressed are our current opinions as of the date appearing on this material only and are subject to change without notice.